



Diesel and LPG Forklift Trucks Capacity 2000 – 2500 kg H 20, H 25

SERIES 392



Linde Material Handling

Linde

Safety

Linde ProtectorFrame: Overhead guard and frame form a structural unit, resulting in maximum stability and safety. Top-mounted tilt jacks allow use of slim mast upright sections for optimum visibility.

Performance

Advanced engine and drive technology combined with the original Linde Load Control system enables the operator to use the truck's vast potential to maximise productivity. Comfortable and precise fingertip control of all mast functions.

Comfort

Linde brings to this forklift a generously sized automobile-class workspace. Designed to the most advanced ergonomic standards. Spacious cab interior, adjustable armrest, suspension seat and functional positioning of easy-actuation controls allows fast, stress-free working.

Reliability

Proven in tough sustained operation. Isolation of the cab from the mast, drive axle and chassis results in reduced shock and vibration. Maintenance-free mounting of axles and tilt jacks cuts downtime and operating costs.

Productivity

Effective and cost-efficient at work: The original Linde hydrostatic drive cost does away with gearshift, clutch, differential and drum brakes. As a result, servicing costs are low, truck uptime is high and productivity is enhanced.

Technical data

| | | | | | |
|------------------|------------|--|---------------------------------------|----------------------------|----------------------------|
| Characteristics | 1.1 | Manufacturer | | LINDE | LINDE |
| | 1.2 | Model designation | | H20D | H20T |
| | 1.3 | Power unit: Battery, diesel, gasoline, LP gas, AC | | Diesel | LPG |
| | 1.4 | Operation: Manual, pedestrian, rider stand, rider seat, order picker | | Seated | Seated |
| | 1.5 | Load capacity | Q (kg) | 2000 | 2000 |
| | 1.6 | Load center | c (mm) | 500 | 500 |
| | 1.8 | Load distance | x (mm) | 390 | 390 |
| | 1.9 | Wheelbase | y (mm) | 1865 | 1865 |
| | Weight | 2.1 | Service weight | kg | 3274 |
| 2.2 | | Axle load with load, front/rear | kg | 4635/639 | 4599/656 |
| 2.3 | | Axle load without load, front/rear | kg | 1681/1593 | 1645/1610 |
| Wheels and tyres | 3.1 | Tyres: Solid rubber (R), Superelastic (SE), Pneumatic (P), Polyurethane (PU) | | SE | SE |
| | 3.2 | Tyre size, front | | 23 x 9 - 10 ¹⁾ | 23 x 9 - 10 ¹⁾ |
| | 3.3 | Tyre size, rear | | 6.50 - 10 ⁴⁾ | 6.50 - 10 ⁴⁾ |
| | 3.5 | Wheels, number front/rear (x = driven) | | 2 (4)x/ 2 ²⁾ | 2 (4)x/ 2 ²⁾ |
| | 3.6 | Track width, front | b10 (mm) | 972 (1140) ⁵⁾²⁾ | 972 (1140) ⁵⁾²⁾ |
| | 3.7 | Track width, rear | b11 (mm) | 942 ⁷⁾ | 942 ⁷⁾ |
| | Dimensions | 4.1 | Mast/fork carriage tilt, forward/back | α/β (°) | 5/8 |
| 4.2 | | Height of mast, lowered | h1 (mm) | 2227 ³⁾ | 2227 ³⁾ |
| 4.3 | | Free lift | h2 (mm) | 150 | 150 |
| 4.4 | | Lift | h3 (mm) | 3150 | 3150 |
| 4.5 | | Height of mast, extended | h4 (mm) | 3793 | 3793 |
| 4.7 | | Height of overhead guard/cab | h6 (mm) | 2170 | 2170 |
| 4.8 | | Height of seat | h7 (mm) | 1065 | 1065 |
| 4.12 | | Height of tow coupling | h10 (mm) | 655 | 655 |
| 4.19 | | Overall length | l1 (mm) | 3635 | 3635 |
| 4.20 | | Length to fork face | l2 (mm) | 2635 | 2635 |
| 4.21 | | Overall width | b1/b2 (mm) | 1180 ⁶⁾ | 1180 ⁶⁾ |
| 4.22 | | Fork dimensions | s/e/l (mm) | 45 x 100 x 1000 | 45 x 100 x 1000 |
| 4.23 | | Fork carriage to DIN 15173, Class/Form A, B | | 2A | 2A |
| 4.24 | | Width of fork carriage | b3 (mm) | 1080 ⁹⁾ | 1080 ⁹⁾ |
| 4.31 | | Ground clearance under mast, with load | m1 (mm) | 111 | 111 |
| 4.32 | | Ground clearance, center of wheelbase | m2 (mm) | 131 | 131 |
| 4.33 | | Aisle width, 1000 x 1200 mm pallet crosswise | Ast (mm) | 3972 | 3972 |
| 4.34 | | Aisle width, 800 x 1200 mm pallet lengthwise | Ast (mm) | 4172 | 4172 |
| 4.35 | | Turning radius | Wa (mm) | 2382 | 2382 |
| 4.36 | | Minimum pivot point distance | b13 (mm) | 580 | 580 |
| Performance | | 5.1 | Travel speed, with/without load | km/h | 22/22 |
| | 5.2 | Lift speed, with/without load | m/s | 0.55/0.56 | 0.55/0.56 |
| | 5.3 | Lower speed, with/without load | m/s | 0.56/0.56 | 0.56/0.56 |
| | 5.5 | Tractive force, with/without load | N | 15020/13190 | 15020/12910 |
| | 5.7 | Climbing ability, with/without load | % | 28/34 | 28/33 |
| | 5.9 | Acceleration, with/without load | s | 5.3/4.5 | 5.3/4.5 |
| | 5.10 | Service brake | | hydrostatic | hydrostatic |
| Drive | 7.1 | Engine manufacturer/type | | VW/BXT | VW/BEF |
| | 7.2 | Engine output to ISO 1585 | kW | 30 | 36 |
| | 7.3 | Rated speed | min ⁻¹ | 2800 | 2600 |
| | 7.4 | Number of cylinders/cubic capacity | cm ³ | 4/1896 | 4/1984 |
| | 7.5 | Fuel consumption to VDI cycle | l/h; kg/h | 2.7 | 2.5 |
| Others | 8.1 | Traction control | | hydrostatic transmission | hydrostatic transmission |
| | 8.2 | Working pressure for attachments | bar | 175 (190) ⁸⁾ | 175 (190) ⁸⁾ |
| | 8.3 | Oil flow for attachments | l/min | 32 | 32 |
| | 8.4 | Noise level at driver's ear to EN 12053 | dB(A) | 79 | 79 |
| | 8.5 | Tow coupling, design/type | | DIN 15170H | DIN 15170H |

1) Optionally 6.50 - 10 twin tyres, P and SE; single tyres 23 x 9 - 10/14PR and SE 23 x 10 - 12

2) Figures in parentheses for twin tyres

3) With 150mm free lift on standard mast

4) Figures in parentheses for duplex/triplex masts

5) Optionally 6.50 - 10/10 PR, 23 x 9 - 10 (P and SE)

6) 1024 mm for SE 23 x 10 - 12 tyres

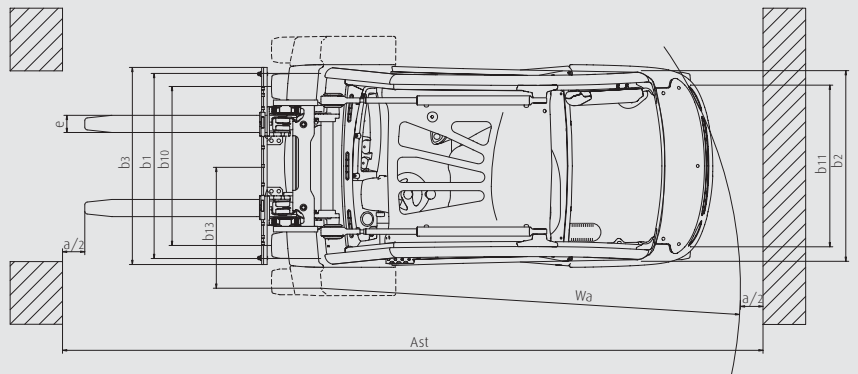
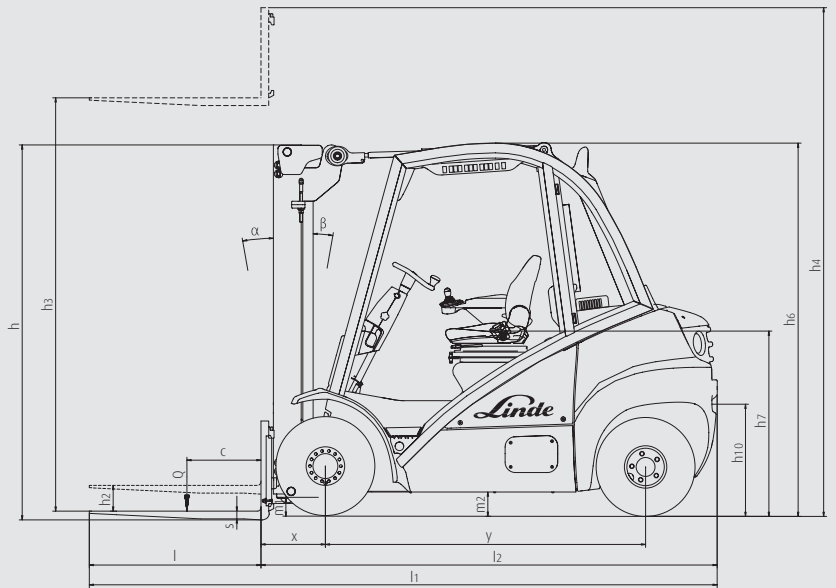
7) 1189 mm for 23 x 9 - 10/14 PR tyres, 1273 mm for 23 x 10 - 12 tyres

PR twin 1506 mm SE 6.50 - 10 twin tyres, 1550 mm for 6.50 - 10/10

8) Track width 932 mm for 23 x 9 - 10 pneumatic tyres/SE

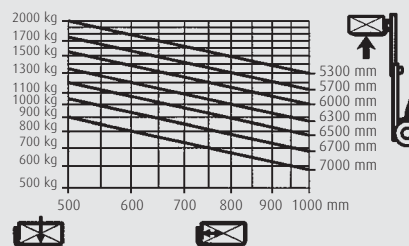
9) Figures in parentheses for triplex mast

| | |
|-----------------------------|-----------------------------|
| LINDE | LINDE |
| H25D | H25T |
| Diesel | LPG |
| Seated | Seated |
| 2500 | 2500 |
| 500 | 500 |
| 390 | 390 |
| 1905 | 1905 |
| 3575 | 3556 |
| 5382/693 | 5347/709 |
| 1714/1861 | 1679/1877 |
| SE | SE |
| 23x9 - 10 ¹⁾ | 23x9 - 10 ¹⁾ |
| 6.50 - 10 ⁴⁾ | 6.50 - 10 ⁴⁾ |
| 2 (4)x/ 2 ²⁾ | 2 (4)x/ 2 ²⁾ |
| 972 (1140) ^{3) 2)} | 972 (1140) ^{5) 2)} |
| 942 ⁷⁾ | 942 ⁷⁾ |
| 5/8 | 5/8 |
| 2227 ³⁾ | 2227 ³⁾ |
| 150 | 150 |
| 3150 | 3150 |
| 3793 | 3793 |
| 2170 | 2170 |
| 1065 | 1065 |
| 645 | 645 |
| 3675 | 3675 |
| 2675 | 2675 |
| 1180 ⁶⁾ | 1180 ⁶⁾ |
| 45 x 100 x 1000 | 45 x 100 x 1000 |
| 2A | 2A |
| 1080 ⁹⁾ | 1080 ⁹⁾ |
| 109 | 109 |
| 129 | 129 |
| 4010 | 4010 |
| 4210 | 4210 |
| 2420 | 2420 |
| 580 | 580 |
| 22/22 | 22/22 |
| 0.55/0.56 | 0.55/0.56 |
| 0.56/0.56 | 0.56/0.56 |
| 15020/13450 | 15020/13180 |
| 24/31 | 24/31 |
| 5.5/4.7 | 5.5/4.7 |
| hydrostatic | hydrostatic |
| VW/BXT | VW/BEF |
| 30 | 36 |
| 2800 | 2600 |
| 4/1896 | 4/1984 |
| 3.0 | 2.7 |
| hydrostatic transmission | hydrostatic transmission |
| 205 (220) ⁸⁾ | 205 (220) ⁸⁾ |
| 32 | 32 |
| 79 | 79 |
| DIN 15170H | DIN 15170H |

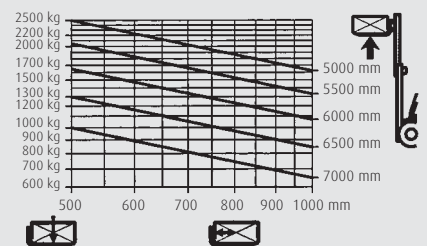


Lifting capacity diagrams

H20



H25



Lifting capacity diagrams valid with SE-tyres.



| Standard mast (in mm) | | | | | | | | |
|--------------------------|-----------|----------------|------|------|------|------|------|---|
| Lift | h3 | H 20/25 | 3150 | 3450 | 3750 | 4050 | 4550 | - |
| Height of mast, lowered | h1 | H 20/25 | 2227 | 2377 | 2527 | 2677 | 2927 | - |
| Height of mast, extended | h4 | H 20 | 3703 | 4103 | 4303 | 4603 | 5103 | - |
| | | H 25 | 3793 | 4193 | 4393 | 4693 | 5193 | - |
| Free lift | h2 | H 20/25 | 150 | 150 | 150 | 150 | 150 | - |
| Duplex mast (in mm) | | | | | | | | |
| Lift | h3 | H 20/25 | 3170 | 3770 | 4070 | - | - | - |
| Height of mast, lowered | h1 | H 20/25 | 2154 | 2454 | 2604 | - | - | - |
| Height of mast, extended | h4 | H 20 | 3700 | 4300 | 4600 | - | - | - |
| | | H 25 | 3813 | 4413 | 4713 | - | - | - |
| Free lift | h2 | H 20 | 1624 | 1924 | 2074 | - | - | - |
| | | H 25 | 1511 | 1811 | 1961 | - | - | - |
| Triplex mast (in mm) | | | | | | | | |
| Lift | h3 | H 20/25 | 4715 | 5515 | 5965 | 6465 | - | - |
| Height of mast, lowered | h1 | H 20/25 | 2154 | 2454 | 2604 | 2804 | - | - |
| Height of mast, extended | h4 | H 20 | 5245 | 6045 | 6495 | 6995 | - | - |
| | | H 25 | 5258 | 6158 | 6608 | 7108 | - | - |
| Free lift | h2 | H 20 | 1624 | 1924 | 2074 | 2274 | - | - |
| | | H 25 | 1511 | 1811 | 1961 | 2161 | - | - |

Alternative lift heights on request.

Standard and optional equipment

Standard equipment

Truck

Linde twin drive pedals to control forward/reverse travel and braking

Linde Load Control integrated in armrest

Container entry height (overhead guard 2,170 mm)

Hydraulic-suspension comfort-class seat with extensive range of adjustment

Hydrostatic steering with on-demand power assist

High safety and stability ensured by Linde ProtectorFrame

Air intake filter with integral cyclone separator

High-performance hydraulic filter concept, preserves maximum oil purity and extends life of all hydraulic components

Anti-glare display with fuel gauge, clock, hour meter and servicing information

Control lights on display for engine oil pressure, engine overheating, parking brake, audible warning signal for engine and hydraulic oil temperature, blocked intake filter and low fuel level

Plenty of storage space for writing utensils, beverage cans, etc.

Superelastic tyres

LPG truck fitted with two-way catalytic converter and the gas cylinder mount is ergonomically designed for easy changing

LPG truck is fitted with accurate ultrasonic fuel level indicator for exchange cylinders

LPG volumetric fuel tank version has a fuel level indicator in the display consul

Mast

Standard mast lift height $h_3 = 3,150$ mm

Standard, duplex and triplex masts

Top-mounted tilt jacks

Zero-maintenance mast and tilt jack cylinder mounting

Rubber-mounted joints

Electronic tilt angle limiting

Fork length $l = 1,000$ mm

Fork carriage width $b_3 = 1,080$ mm (H 20), $1,150$ mm (H 25)

Options

Single drive pedal with direction selector positioned on armrest

Standard masts from $3,150$ mm to $6,550$ mm lift

Duplex masts (full free lift) from $3,170$ mm to $4,720$ mm lift

Triplex masts (full free lift) from $4,715$ mm to $6,465$ mm lift

Integral sideshift

Load backrest

One or two auxiliary hydraulic circuits for all mast types

Alternative fork lengths

Overhead guard can be upgraded to full cabine with roof, front and rear screens and doors (also available with tinted glass)

Wiper-washers for front, rear and roof screens

Seats providing additional comfort and adjustments

Cab heater with integral pollen filter

Radio with cassette player and speakers

Roof shade, clipboard, interior lighting, height-adjusting steering column

Truck lighting, work lamps

Mirrors

Highway specifications

Integral diesel particulate filter with charge status indicator on the display consul

Air precleaner

Audible reversing alarm, flasher and strobe beacons

Biodiesel (RME) fuel version

Custom paintwork

Other options available on request

Features

Original Linde hydrostatic drive

- Responsive, smooth and precise driving
- No clutch, differential or drum brakes; hydrostatic drive assumes function of service brake
- Robust drive system, well proven in severest duty
- Low maintenance costs and long life



Linde ProtectorFrame

- Safe and robust chassis, enclosed on all sides
- Engine hood and servicing doors open wide for convenient access to all components

Linde twin drive pedals

- Quick change of forward/reverse direction without changing feet on pedals
- Short pedal stroke
- No leg fatigue
- Increased productivity

Linde Load Control

- Accurate, safe load handling
- Effortless fingertip control of all mast functions
- Traction and lift functions completely separate

High-economy engine technology

- Diesel and LPG engines incorporating most advanced technology
- High torque
- Low fuel consumption
- Low exhaust gas and soot emission levels



Linde operator compartment

- Designed to advanced ergonomic standards
- Spacious cab with automobile-equivalent legroom
- Excellent visibility of load and surroundings due to slim-line mast sections
- Cushioned drive axle reduces road shock
- Minimum driving noise

Linde Truck Control

- Reliable electronic controller
- Easily matched to individual requirements
- High dependability resulting from redundant monitoring systems
- Automatic control of engine speed as function of load
- Casing totally enclosed for protection from dust and dirt

Linde clear-view mast

- Superb visibility through slim-profile sections of mast
- Full load capacity up to maximum lift height
- Exceptional residual capacity
- Zero-maintenance rubber mounting of mast and tilt jacks
- Electronic limiting of tilt angle

